



Empowering

Women in Trucking



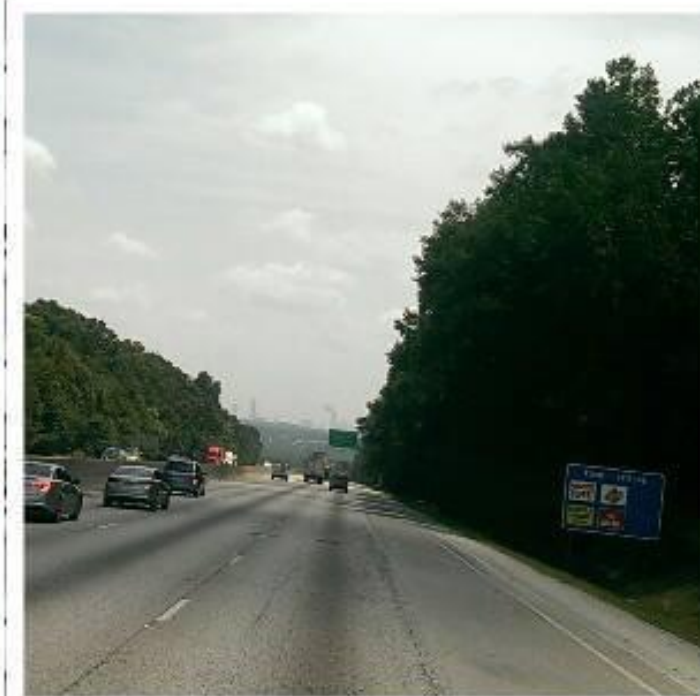
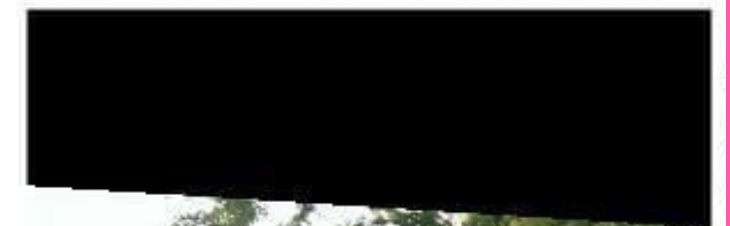
I parked it



AiN'T NO MOUNTAIN
HIGH ENOUGH



29 YEARS
OLD



Quick Stats on Monteagle

- **Steepest grade is 6%**
- **Elevation is 2,000ft**
- **Mountain range 4.5 miles**
- **Truck Inspection**
- **Runaway Truck Ramp**
- **Brake Fade/Failure**



Quick Stats on Monteagle

- **Steepest grade is 6%**
- **Elevation is 2,000ft**
- **Mountain range 4.5 miles**
- **Truck Inspection Station**



RUNAWAY
TRUCK RAMP
↓

TRUCK RAMP



SUPPORT FOR WOMEN OF THE TRUCKING INDUSTRY



PROMOTING DIVERSITY AND INCLUSION:

Business leaders can promote diversity and inclusion in their organizations by actively seeking out and hiring women for leadership positions, providing equal pay and benefits, and creating a culture of respect and inclusion.

PROVIDING MENTORSHIP AND CAREER DEVELOPMENT OPPORTUNITIES:

Business leaders can provide mentorship and career development opportunities to women in the supply chain, including training programs, networking opportunities, and leadership development programs

ENCOURAGING WORK-LIFE BALANCE:

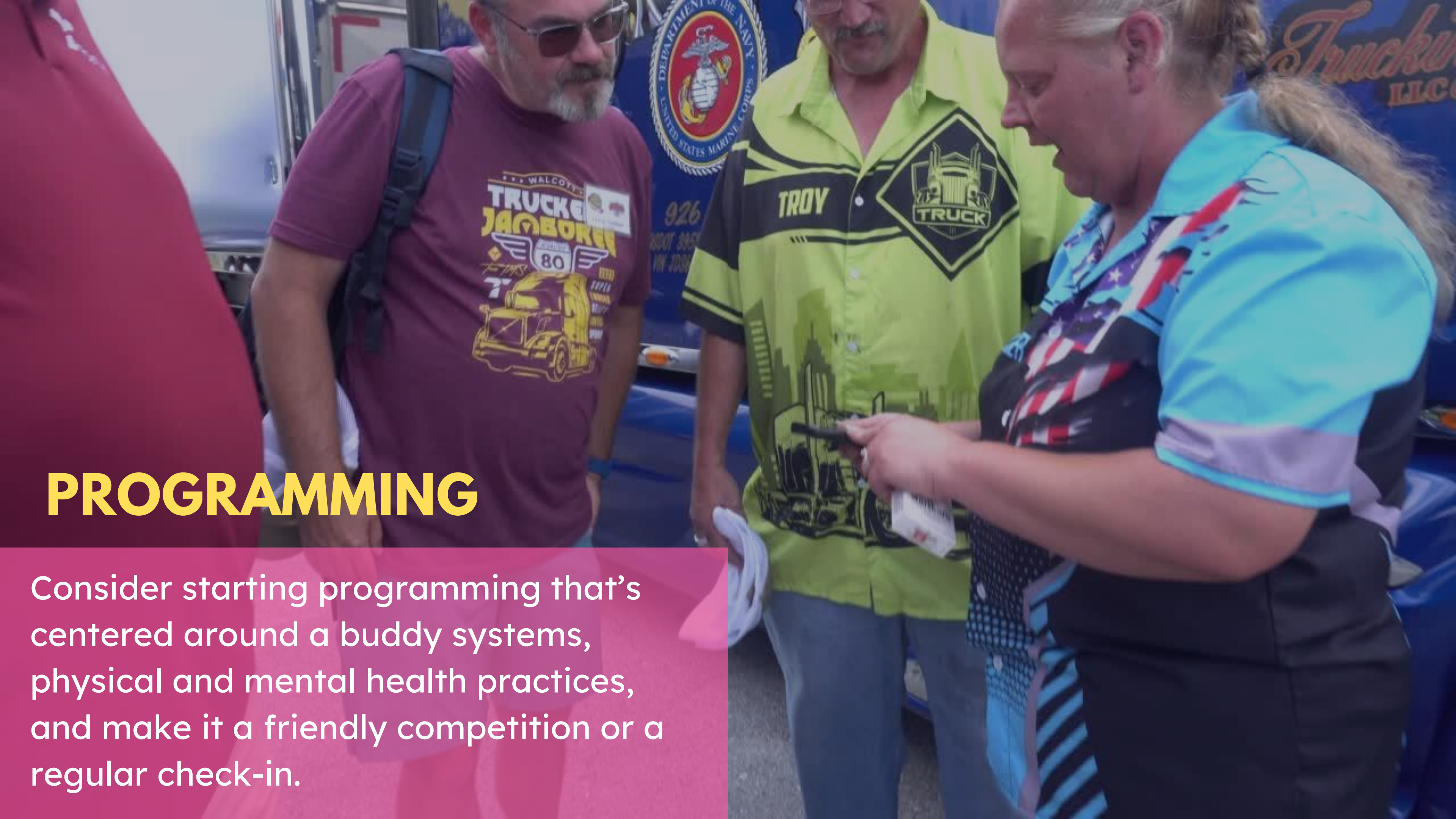
Business leaders can support women in the supply chain by promoting work-life balance through flexible work arrangements, family-friendly policies, and providing resources for childcare and elder care.



INVEST & SUPPORT



Communities like the SHE Trucking Foundation, Inc. provide safe spaces, mentorship, education and resources for women in the trucking industry. They are core to our longevity in the field.



PROGRAMMING

Consider starting programming that's centered around a buddy systems, physical and mental health practices, and make it a friendly competition or a regular check-in.



SAFE TRAINING PROGRAMS

Perform wellness checks with new drivers during training and pair women trainees with women trainers when possible.



REWARD YOUR SAFE DRIVERS

Pay your drivers for their
on-duty time for their
pre & post-trip inspections.

A woman with long, dark, curly hair is standing on a stage, speaking into a microphone. She is wearing a black, off-the-shoulder top and a lanyard with a badge that says "SPONSOR" and "VARIANT". Behind her, four other women are seated on a stage, also wearing lanyards. The background is a red curtain. The overall scene is a panel discussion or a presentation.

REVIVE THE DRIVER ADVISORY BOARD

Women can share first-hand insight on ways to improve technology, making them safer drivers while on the road.

Ain't No Mountain

High Enough